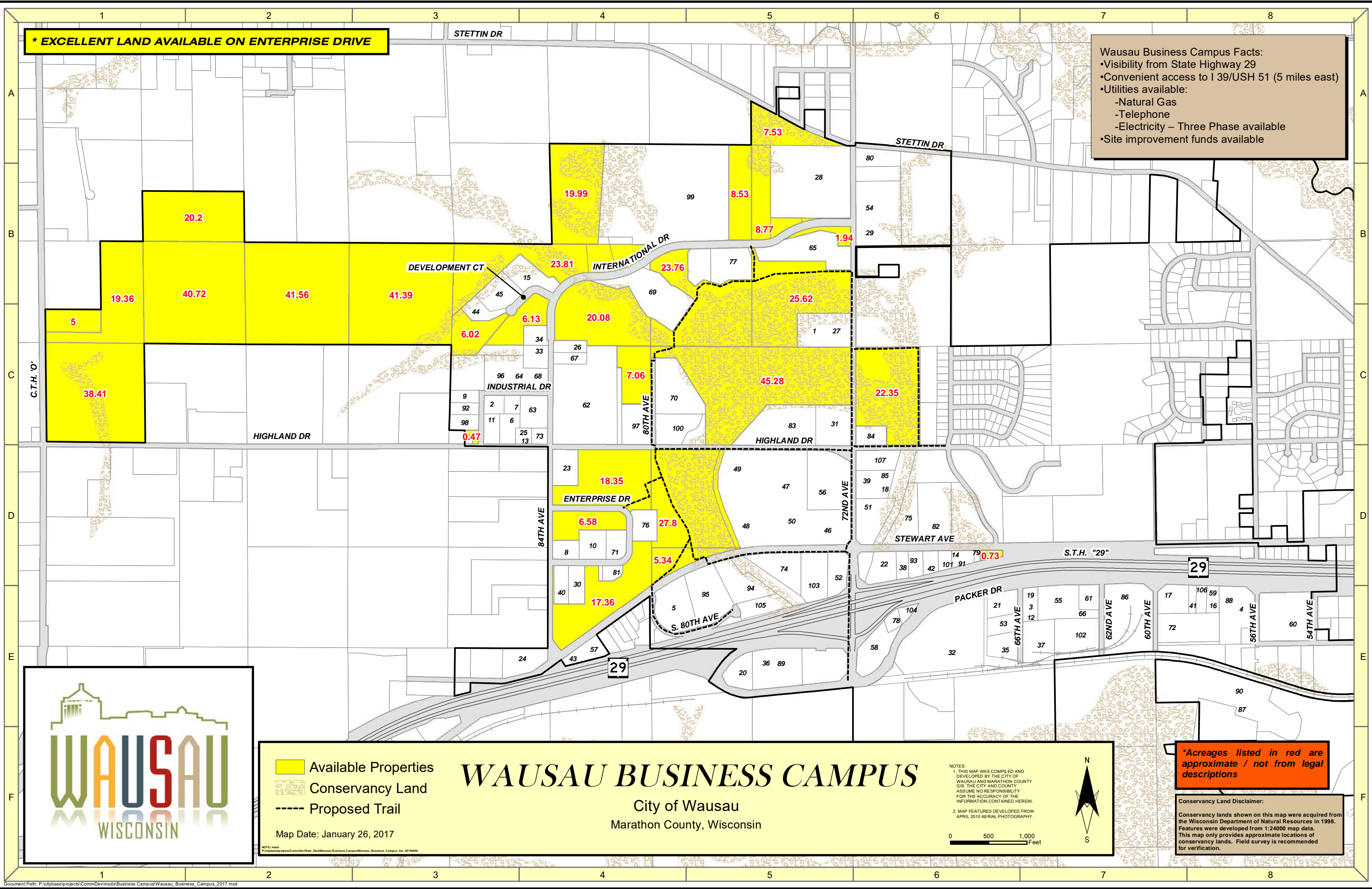


*** EXCELLENT LAND AVAILABLE ON ENTERPRISE DRIVE**

Wausau Business Campus Facts:

- Visibility from State Highway 29
- Convenient access to I 39/USH 51 (5 miles east)
- Utilities available:
 - Natural Gas
 - Telephone
 - Electricity – Three Phase available
- Site improvement funds available



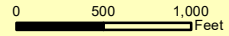
Available Properties
 Conservancy Land
 Proposed Trail

Map Date: January 26, 2017

WAUSAU BUSINESS CAMPUS

City of Wausau
Marathon County, Wisconsin

NOTES:
1. THIS MAP WAS COMPILED AND DEVELOPED BY THE CITY OF WAUSAU AND MARATHON COUNTY GIS. THE CITY AND COUNTY ASSUME NO RESPONSIBILITY FOR THE ACCURACY OF THE INFORMATION CONTAINED HEREIN.
2. MAP FEATURES DEVELOPED FROM APRIL 2010 AERIAL PHOTOGRAPHY.



***Acreages listed in red are approximate / not from legal descriptions**

Conservancy Land Disclaimer:
Conservancy lands shown on this map were acquired from the Wisconsin Department of Natural Resources in 1998. Features were developed from 1:24000 map data. This map only provides approximate locations of conservancy lands. Field survey is recommended for verification.

| ID | Company | Location | ID | Company | Location | ID | Company | Location |
|----|-------------------------------------|----------|----|-------------------------------|----------|-----|---------------------------------|----------|
| 1 | 2510 Restaurant | C5 | 36 | Hole Products | E5 | 71 | Sherwin-Williams | D4 |
| 2 | Allied Insulation Supply Co Inc | C3 | 37 | Home Acres Building Supply | E7 | 72 | Sonoco Consumer Packaging Group | E7 |
| 3 | American Science and Technology | E7 | 38 | IBEW Local 388 | D6 | 73 | Sound Solutions | C4 |
| 4 | American Welding & Gas | E8 | 39 | Independent Printing | D6 | 74 | Southern Stretch Forming | D4 |
| 5 | Applied Fab and Machining | E4 | 40 | Integra Tool & Mfg. | D4 | 75 | State of Wisconsin Crime Lab | D6 |
| 6 | Bay Building Supplies Inc. | C3 | 41 | Interstate Brands Corp | E8 | 76 | Steel Structures | D4 |
| 7 | Bay Towel | C3 | 42 | ITU | D6 | 77 | TOMCOR Industries | B5 |
| 8 | Bennett Hardwoods | D4 | 43 | Kaman | E4 | 78 | Total Tool | E6 |
| 9 | Berens Contracting LLC | C3 | 44 | LB Medwaste | C3 | 79 | Tradesmen International | D6 |
| 10 | Canteen | D4 | 45 | LB Medwaste | C3 | 80 | UAS Labs | A6 |
| 11 | Canteen | C3 | 46 | Linetec | D5 | 81 | United Mailing Service | D4 |
| 12 | Capital Equipment & Handling | E7 | 47 | Linetec | D5 | 82 | United Parcel Service | D6 |
| 13 | Centric Inc | C3 | 48 | Linetec | D5 | 83 | Vacant | C5 |
| 14 | Clean Air Service Inc. | D6 | 49 | Linetec | D5 | 84 | Vacant | C6 |
| 15 | Composite Envisions | B4 | 50 | Linetec | D5 | 85 | Vacant | D6 |
| 16 | Comspec | E8 | 51 | Major Industries Inc. | D6 | 86 | Vacant | E7 |
| 17 | Conger Industries Inc | E7 | 52 | Marathon County garage | D5 | 87 | Vacant | E8 |
| 18 | Cover It All | D6 | 53 | Marathon Label | E6 | 88 | Vacant | E8 |
| 19 | CPPL | E7 | 54 | Menzner Lumber and Supply Co. | B6 | 89 | Vacant | E5 |
| 20 | CTL | E5 | 55 | Mid-State International | E7 | 90 | Vacant | E8 |
| 21 | Design Air | E6 | 56 | Mid Wisconsin Beverages Inc. | D5 | 91 | Vacant | D6 |
| 22 | Dietary Pros Inc. | D6 | 57 | Midland Paper | E4 | 92 | Vacant | C3 |
| 23 | Diversified Installation Services | D4 | 58 | Motion Industries | E6 | 93 | Van Ert Electric | D6 |
| 24 | E O Johnson Co | E3 | 59 | Network Solutions | E8 | 94 | Wausau Coated Products | D5 |
| 25 | E O Johnson Co. | C3 | 60 | Northern Valley Workshop | E8 | 95 | Wausau Coated Products | E4 |
| 26 | Element Materials Technology | C4 | 61 | Office Solutions | E7 | 96 | Wausau Coated Products | C3 |
| 27 | Entrepreneurial & Education Center | C5 | 62 | CLG Industrial | C4 | 97 | Wausau Container Corp | C4 |
| 28 | Footlocker.com/Eastbay | B5 | 63 | Piper Products | C4 | 98 | Wausau Electric | C3 |
| 29 | Footlocker.com/Eastbay | B6 | 64 | Planet Label | C3 | 99 | Wausau Window and Wall | B4 |
| 30 | FSS Business Systems | D4 | 65 | Polywood Fabrication | B5 | 100 | Werner Electric Supply Co | C4 |
| 31 | Graphic House Inc. | C5 | 66 | RDiesel | E7 | 101 | West Side Auto | D6 |
| 32 | Green Bay Packaging Inc | E6 | 67 | Rib Mountain Glass | C4 | 102 | West Side Warehousing | E7 |
| 33 | Handcrafted Furniture Co | C4 | 68 | Roastar | C3 | 103 | West Side Warehousing #2 | D5 |
| 34 | Handcrafted Furniture Co - North Bl | C4 | 69 | Rocket Industrial | B4 | 104 | Winterhoff Enterprises | E6 |
| 35 | Hartland Lubricants and Chemicals | E6 | 70 | Roto-Graphics Inc. | C4 | 105 | Wisconsin Lift Truck Corp | E5 |
| | | | | | | 106 | Wisconsin Shower Door | E8 |
| | | | | | | 107 | Young's LTC | D6 |